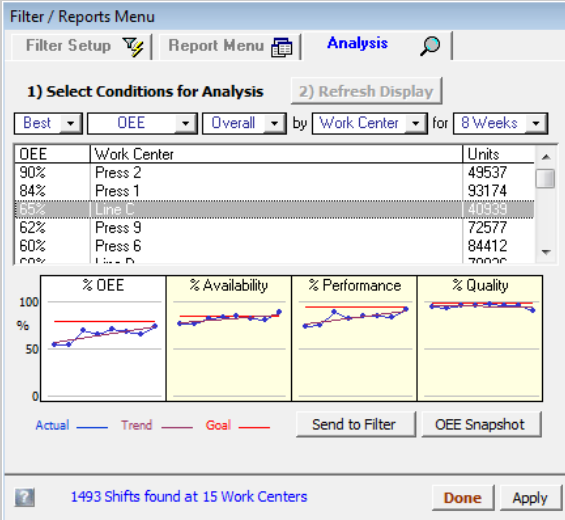


Powerful **Analysis** Tools which quickly identify areas for improvement. Automatic detection of unfavorable trends as well as missed goals.



OEE Management (Demo User Logged On - Level 3)

Set View: Today Yesterday Logon

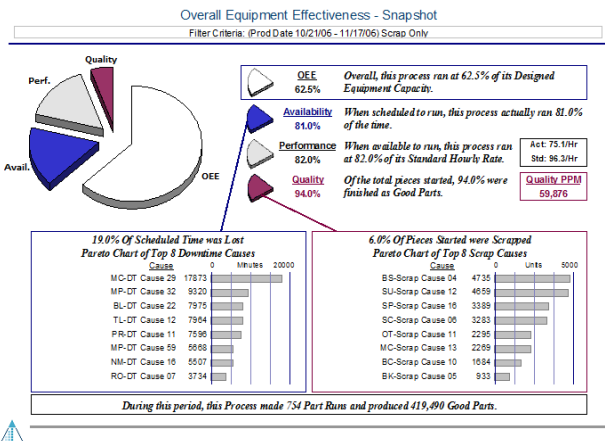
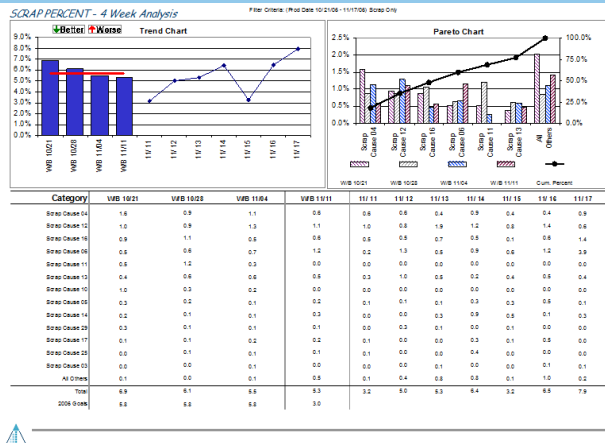
Range: 11/13/06 thru 11/14/06 New Shift Import

Day	Shift	Prod	Work Center	Department
11/14/06	Wed	A	351 Press 1	Molding
11/14/06	Wed	A	788 Press 8	Molding
11/14/06	Wed	A	1005 Press 7	Molding
11/14/06	Wed	A	950 Press 6	Molding
11/14/06	Wed	P1	263 Line E	Painting
11/14/06	Wed	A	480 Press 3	Molding
11/14/06	Wed	C	691 Press 9	Molding
11/14/06	Wed	P2	283 Line C	Painting
11/14/06	Wed	P3	635 Line D	Painting
11/14/06	Wed	P3	449 Line C	Painting
11/14/06	Wed	P2	339 Line A	Painting
11/14/06	Wed	P2	440 Line D	Painting
11/14/06	Wed	P1	400 Line A	Painting

FilterCriteria: (Prod Date: 11/13/06 - 11/14/06)

66 Audit QuickTrends Filter/Reports Create Form Exit

www.capstonemetrics.com



Extensive **Reporting** making use of Pareto and Trend charts as well as numerical information. Data filtering tools are simple and flexible.

Crosstab Report - Downtime Causes by Work Center (Units = Minutes)

Filter Criteria: (Prod Date: 11/01/06 - 11/30/06) UnScheduled DT

Work Center	Net Units	Percent Lost	Total Lost	Scrap	Repair	Change	Down	Setup	Hold	Wait	Other	Unsched	All Other
Press 10	19878	33.1%	6632	3427	3145	807	85	1146	432	95			655
Line D	33613	20.9%	6987	4280	1851	1391	180	180	193				992
Press 3	30708	22.4%	6854	2681	60	1543	1200	35	1104	950	584	72	625
Press 5	32026	18.5%	7562	3520	690	730	30	260	150	397	60		1425
Press 7	22905	25.0%	7510	240	65	4620	178	95	901	47	315		1049
Press 9	35024	17.6%	7496	3690	1355	2	818	456	210				905
Line A	19175	25.6%	6590	2430	240	956							1918
Press 6	35687	13.9%	5773	2436	195	952	436	519	245				820
Line C	20963	18.0%	6552	3350	60	1108	497	598	60	478			1117
Press 1	35604	13.1%	5368	2092	1630	591	333	980	300	255	10		458
Line E	15120	21.2%	4065	1630	591	333	980	300	255	10			941
Press 4	36203	9.4%	3787	920	240	1107	55	540	41	160			535
Press 2	21407	14.1%	3058	240	240	1507	760	5	150	75			725
Press 8	31359	8.6%	2966	960	1573	760	5	150	75				403
Line B	8775	23.0%	2625	1320									135
Report Totals	466427	18.2%	90343	19544	12775	10733	8169	8005	6378	3895	2919	2612	2485
													3.1%

www.capstonemetrics.com

OEE Management Software

Overall *Equipment Effectiveness*

"A manufacturer cannot be truly competitive without clear visibility to its OEE and the critical underlying information"



www.capstonemetrics.com

The Line of Sight to Manufacturing Excellence



www.capstonemetrics.com

What is OEE?

OEE (or Overall Equipment Effectiveness) is a top-level metric, which is comprised of 3 underlying elements. OEE is a direct measure of how companies utilize capital while minimizing manufacturing cost.

OEE = Availability X Performance X Quality

Availability: reflects equipment uptime

Performance: reports how fast processes run compared to designed standards

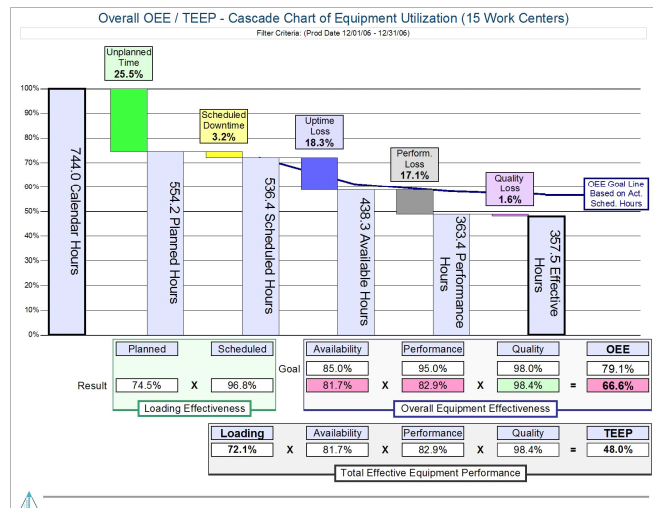
Quality: indicates the process yield

TEEP (or Total Effective Equipment Performance) is a 2nd top-level metric, adding a 4th underlying element...

TEEP = Loading X OEE

Loading: Percent of scheduled time/calendar time

A report from **Capstone OEE Management**, shown below, depicts the effects of OEE/TEEP losses. The business result is **excess cost and loss of capacity**.



Why measure your OEE?

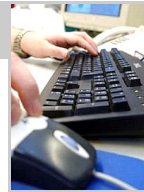
1. Favorable changes in OEE/TEEP directly link to gains in *Profitability*
2. Reduced *Variable Cost* through Increased Availability, Performance and Quality
3. Lower *Fixed Cost* via improved plant Loading
4. On a global stage, fine-tuned OEE can be leveraged to offset *Labor Cost* disadvantages

www.capstonemetrics.com

5. Reduce *Inventory* as processes gain reliability
6. OEE Management is the “*Continuous Improvement Engine*” that drives *Lean Manufacturing* strategies
7. More effective *Capital Planning* through improved understanding and utilization of current capacity
8. OEE is the universal yardstick for *Benchmarking* of manufacturing effectiveness

Why choose Capstone?

Capstone *OEE Management* is designed to capture all key data from various sources, then provide results for reporting and analysis. Key features:



1. Superior reporting of all of the OEE metrics, with extensive visibility to the underlying causes. Reporting is easily focused at plant, department, work center, shift and part levels.
2. Extremely fast implementation, typically one or two days, at a surprisingly low cost
3. Built-in Data Analysis tools which quickly direct focus and effort to the greatest opportunities
4. Either enter data directly or interface with your business system (ERP) or shop floor data system
5. Network-ready software offers organization-wide access to data, ease of use, and minimal training
6. Additionally, *OEE Management* meets all of the traditional needs for daily production reporting
7. Report data may also be directly exported to Microsoft® Excel for additional study or reporting
8. Includes a Labor Efficiency Module to track and report labor against standards

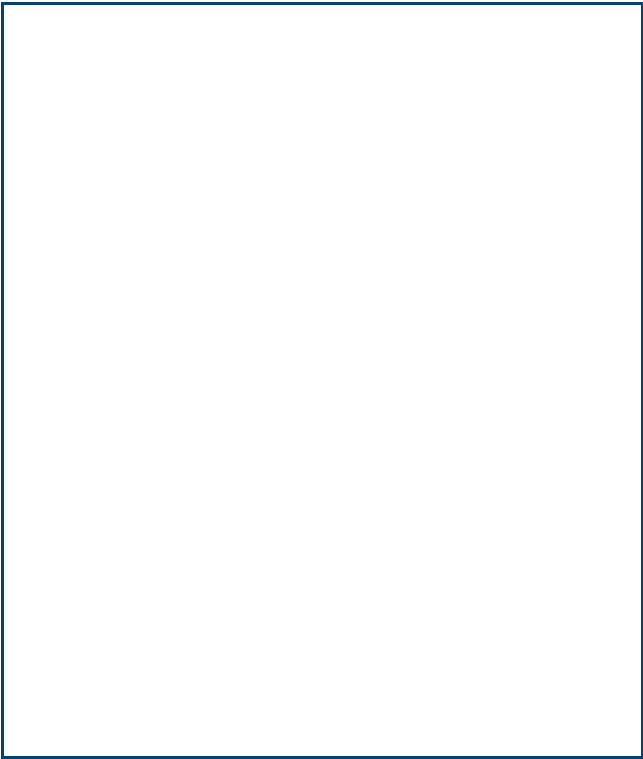
Capstone *OEE Management* is the premier product for businesses who are driven to excel. Every aspect of it's design results from a clear understanding of the challenges which face today's manufacturer.

The Microsoft® Access Platform

The Microsoft® Access Platform is powerful and well established. OEE data files are documented, user accessible, and ODBC Compliant.

OEE Management requires Microsoft® Access (2000 through 2013) - or the FREE Access 2010 Runtime.

www.capstonemetrics.com



© 2001-2014 Capstone Metrics LLC

Read more and download a Free Demo at...

www.capstonemetrics.com



The Line of Sight to Manufacturing Excellence